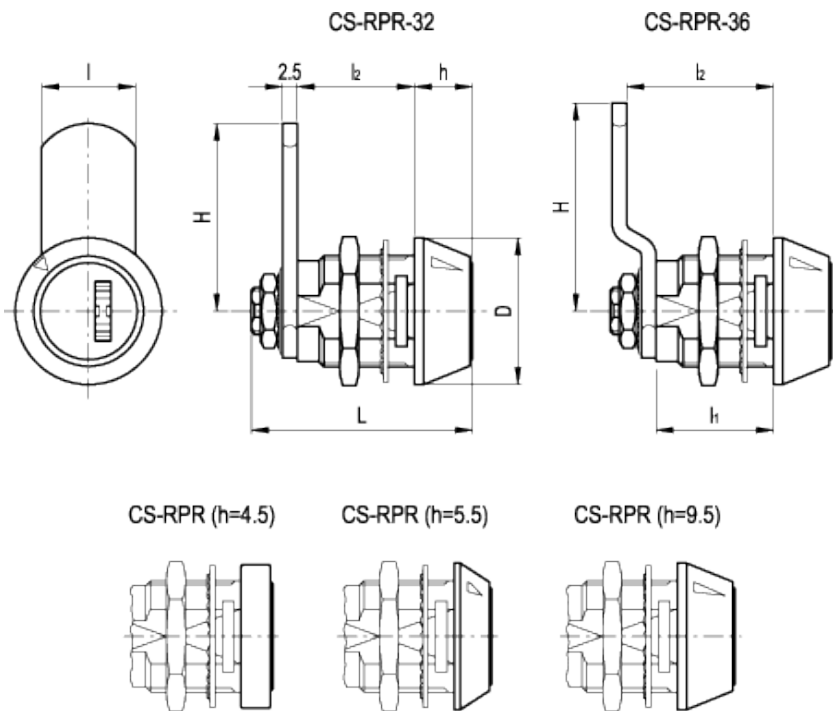


CS-RPR.

Reprogrammable lock latches



technical informations

Lock

With opposing blades and double track key with internal profile, not supplied. 9.791 different combinations.

Stator

Glossy chrome-plated zinc alloy.

Rotor

Chrome-plated zinc alloy with drill-proof hardened steel plate and stainless steel front plate.

Nut

Brass (M19x1).

Internal toothed rings

Zinc-plated steel (the big one), steel (the small one).

Closing lever

Zinc-plated steel, thickness 2.5 mm.

Nut

Brass.

Screw

Zinc-plated steel (only for executions CS-RPR.32-30 and CS-RPR.36-35).

Rotation

180°, with key removable in two positions.

Keys (to be ordered separately)

Programming key: brass.

Normal use key: nickel silver.

- KCR-05: kit with 1 programming key and 5 normal use key.

- KCR-10: kit with 1 programming key and 10 normal use key.

- KCR-01: kit with 25 normal use key.

KCR. kit keys is not included in the supply of CS/RPR lock. To be ordered separately.

Special executions and accessories

- Closing levers in different dimensions.

- Single programming keys.

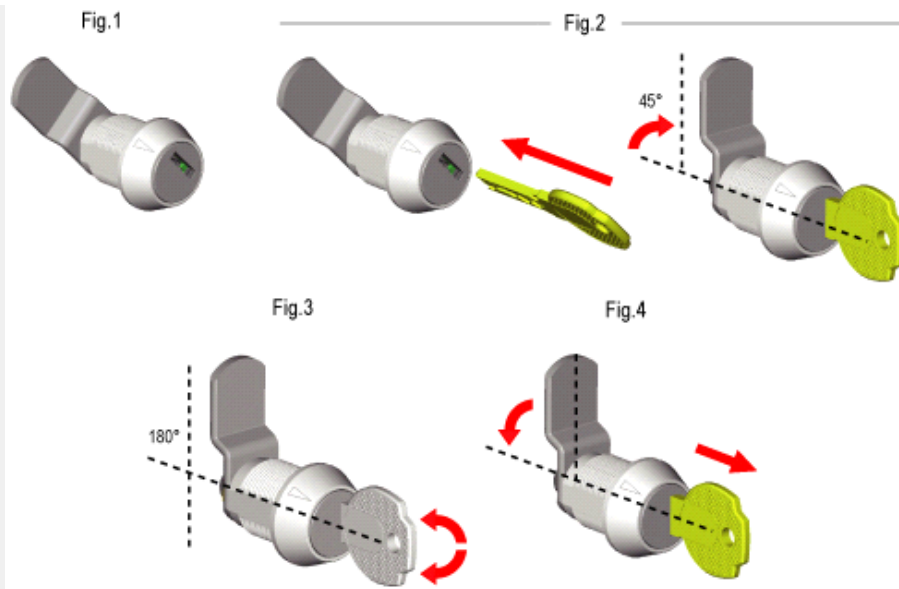
Features and applications

Reprogrammable lock latches CS-RPR are supplied neutral (non-programmed). The rotor is positioned in line with the special index marked on the stator (neutral position).

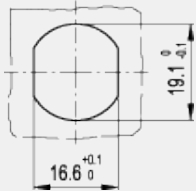
First programming: insert the programming brass key and turn the lock clockwise by 45°. The lock is now programmed. Insert the normal use key in nickel silver to lock or unlock the latch.

Reprogramming of the lock: in order to reprogram the lock, a new kit of keys with a different programming key is required.

Insert the first brass programming key and turn the lock anticlockwise by 45° until the rotor is in the neutral position. Insert the new programming key and turn it clockwise by 45°. Now the lock has been reprogrammed with a new combination and the normal use keys (included in the new kit) in nickel silver can be used to lock or unlock the latch.



Drilling template



Standard Elements		Main dimensions							Weight
Code	Description	H	l ₁	l ₂	D	h	l	L	g
421555	CS-RPR.32-20	32	20	20	25	9.5	16	37.5	65
421557	CS-RPR.32-25	32	25	25	22	4.5	16	37.5	70
421559	CS-RPR.32-30	32	30	30	25	5.5	16	40.5	85
421575	CS-RPR.36-25	35.5	20	25	25	9.5	16	37.5	70
421577	CS-RPR.36-30	35.5	25	30	22	4.5	16	37.5	75
421579	CS-RPR.36-35	35.5	30	35	25	5.5	16	40.5	90



STANDARD MACHINE ELEMENTS WORLDWIDE